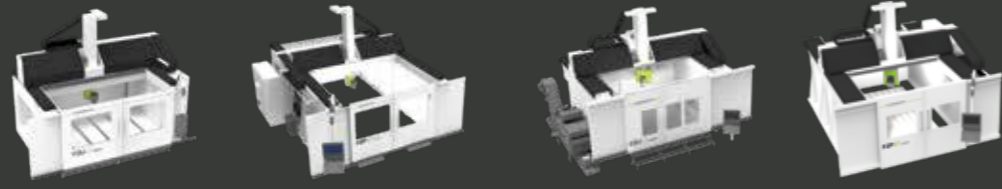


# Produktübersicht

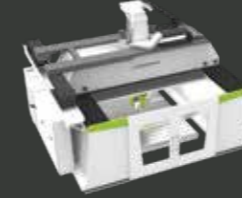
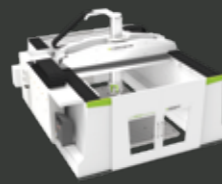


➤ Maschinentypen	➤ FZ22 Portalfräsmaschinen		➤ FZ27 Portalfräsmaschinen	
	FZU22 Unibody Gantry.	FZP22 Performance Gantry.	FZU27 Unibody Gantry.	FZP27 Performance Gantry.
<b>Eigenschaften</b>				
<b>Arbeitsbereiche *</b>				
X-Achse	1 800/2 500 mm	3 000 – 20 000 mm	2 000 – 4 000 mm	3 000 – 20 000 mm
Y-Achse	3 000/3 500 mm	3 000/3 500 mm	2 500/3 000/3 500 mm	2 500 – 4 000 mm
Z-Achse	1 250 mm	1 250 – 1 500 mm	1 250 – 1 750 mm	1 500 – 2 000 mm
<b>Fräsköpfe/-spindeln **</b>				
<b>S2</b> 	15/18 kW, 12/14 Nm 24 000 U/min, HSK-F63		15/18 kW, 12/14 Nm 24 000 U/min, HSK-F63	
<b>C2</b> 	15/18 kW, 12/14 Nm 24 000 U/min, HSK-F63		15/18 kW, 12/14 Nm 24 000 U/min, HSK-F63	
<b>C3</b> 			20/26 kW, 32/41 Nm 26 000 U/min, HSK-F63 24/27 kW, 38/43 Nm 18 000 U/min, HSK-A63 25/35 kW, 60/83 Nm 15 000 U/min, HSK-A63	
<b>VH 10</b> 			34/40 kW, 39/40 Nm 24 000 U/min, HSK-A63	



➤ **Machining Solutions and you**

# Produktübersicht



Maschinentypen	FZ32 Portalfräsmaschinen		FZ37 Portalfräsmaschinen		FZ42 Portalfräsmaschinen		Horizontal-Bearbeitungszentrum
	FZU32 Unibody Gantry.	FZP32 Performance Gantry.	FZU37 Unibody Gantry.	FZP37 Performance Gantry.	FZU42 Unibody Gantry.	FZP42 Performance Gantry.	FZH High Performance Machining Center.
<b>Eigenschaften</b>							
<b>Arbeitsbereiche *</b>							
X-Achse	2 000 – 6 000 mm	3 000 – 10 000 mm	2 500 – 6 000 mm	3 000 – 40 000 mm	2 500 – 6 000 mm	3 000 – 40 000 mm	4 100 – 26 100 mm
Y-Achse	3 000/3 500 mm	2 500 – 4 000 mm	3 000/3 500/4 000 mm	2 500 – 6 000 mm	3 000/3 500/4 000 mm	2 500 – 6 000 mm	1 600/2 100/2 600 mm
Z-Achse	1 250/1 500 mm	1 250 – 2 500 mm	1 250/1 500 mm	1 250 – 3 000 mm	1 250/1 500 mm	1 250 – 3 000 mm	650/850 mm
<b>Fräsköpfe/-spindeln **</b>							
<b>VH 10</b> 	34/41 kW, 39/49 Nm 24 000 U/min, HSK-A63		34/41 kW, 39/49 Nm 24 000 U/min, HSK-A63				
<b>VH 20</b> 			39/52 kW, 32/43 Nm 24 000 U/min, HSK-A63 42/48 kW, 67/76 Nm 24 000 U/min, HSK-A63				39/52 kW, 32/43 Nm 24 000 U/min, HSK-A63 42/48 kW, 67/76 Nm 24 000 U/min, HSK-A63
<b>VH 30</b> 	25/31 kW, 119/148 Nm 20 000 U/min, HSK-A63 74/78 kW, 73/92 Nm 30 000 U/min, HSK-A63/80		25/31 kW, 119/148 Nm 20 000 U/min, HSK-A63 70/86 kW, 167/229 Nm 15 000 U/min, HSK-A100 74/78 kW, 73/92 Nm 30 000 U/min, HSK-A63/80 125/156 kW, 60/75 Nm 30 000 U/min, HSK-A63/80				
<b>VH 40</b> 					70/86 kW, 167/229 Nm 15 000 U/min, HSK-A100 125/156 kW, 60/75 Nm 30 000 U/min, HSK-A63/80 25/31 kW, 119/148 Nm 20 000 U/min, HSK-A63 74/78 kW, 73/92 Nm 30 000 U/min, HSK-A63/80		74/78 kW, 73/92 Nm 30 000 U/min, HSK-A63/80  125/156 kW, 60/75 Nm 30 000 U/min, HSK-A63/80
<b>VH 60</b> 					63/82 kW, 300/392 Nm 15 000 U/min, HSK-A100 93/103 kW, 444/553 Nm 8 000 U/min, HSK-A100 <b>MuST® Spindelwechsel-System:</b> 44/44 kW, 200/230 Nm 10 000 U/min, HSK-A100 45/60 kW, 344/454 Nm 5 000 U/min, HSK-A100 50/58 kW, 95/117 Nm 24 000 U/min, HSK-A63		
<b>M3 ABC</b> 					74/78 kW, 73/92 Nm 30 000 U/min, HSK-A63 125/156 kW, 60/75 Nm 30 000 U/min, HSK-A63/80		74/78 kW, 73/92 Nm 30 000 U/min, HSK-A63 125/156 kW, 60/75 Nm 30 000 U/min, HSK-A63/80